

# **MORTUARY ROOM (PARTITIONED)**

## **Performance Test Data**

Date of report : Aug 31, 2020

	<b>Section</b>
<b>MODEL</b>	<b>MORTUARY ROOM (PARTITIONED)</b>
<b>Period of Performance Test</b>	<b>Aug 26, 2020 ~ Aug 28, 2020</b>



Model	<b>MORTUARY ROOM (Upper side)</b>	
Power supply	220V x 60Hz x 1Ph	
Inner capacity	ℓ	
Outer size	870(W) x 2275(D) x 1770(H,Cabinet)	
Unit	Compressor	FFI12HAK
	Condenser Coil	3/8"x4Rx10Sx250L(f.p4.5mm)
	Evaporator Coil	3/8"x8Rx8Sx185L(t.p4)
	Condenser Motor	9W x 4P
	Evaporator Motor	6W x 4P
	Condenser Fan	230 x 4B
	Evaporator Fan	180 x 5B
	Capillary Tube	0.96(I,D) x 1,400L
	Refrigerant volume	450g (R134a)
Usage	Mortuary refrigerator	
Remarks	Performance Test	



Model	<b>MORTUARY ROOM (Lower side)</b>	
Power supply	220V x 60Hz x 1Ph	
Inner capacity	ℓ	
Outer size	870(W) x 2275(D) x 1770(H,Cabinet)	
Unit	Compressor	FFI12HAK
	Condenser Coil	3/8"x4Rx10Sx250L(f.p4.5mm)
	Evaporator Coil	3/8"x8Rx8Sx185L(공4)
	Condenser Motor	9W x 4P
	Evaporator Motor	6W x 4P
	Condenser Fan	230 x 4B
	Evaporator Fan	180 x 5B
	Capillary Tube	0.96(I,D) x 1,400L
	Refrigerant volume	450g (R134a)
Usage	Mortuary refrigerator	
Remarks	Performance Test	

▣ Refrigerant volume determining test data ( Model: Mortuary room - Partitioned )

NO	Beating point	Refrigerant volume (Aug 27)				PCB SETTING			
		450(upper lower same)				Upper side		Lower side	
-	Humidity	60				Set	4	Set	4
81	Ambient temperature	34.3				/3	0	/3	0
82	Cond. In(상)	61.8				rd	2	rd	2
83	Cond. out	41.3				c2	5	c2	5
84	Evap. in	-22.6				c3	3	c3	3
85	Evap. out	-20.3				d0	0	d0	0
86	Comp. in	16.4				d1	4	d1	4
87	Inner cabine-center (upper left)	-17.1				dt	16	dt	16
88	Inner cabine-center (md md)	-15.3				dp	20	dp	20
89	Inner cabine-center (lower right)	-14.6				dd	2	dd	2
90	sensor	-16.8				F0	1	F0	1
91	Cond. In(Lower)	62.0				F1	10	F1	10
92	Cond. out	41.6				F2	1	F2	1
93	Evap. in	-21.2				F3	1	F3	1
94	Evap. out	-19.9							
95	Comp. in	12.7							
96	Inner cabine-center (upper rear left)	-13.2							
97	Inner cabine-center (md md)	-13.0							
98	Inner cabine-center (lower front right)	-12.3							
99	sensor	-12.9							
-	low pressure ( upper)	0PSI	low pressure ( lower)	2PSI					
-	high pressure	152PSI	high pressure	148PSI					
-	Comp Current	2.73A	Comp Current	2.67A					
-	Operating Current	-	Operating Current	5.98A					

**\* Test Run data ( Model: Mortuary room ) upper side**

1. TEST SPEC: 220V/60Hz/1Ph. Refrigerant R134a (450g)
2. CAREL SETTING: 4°C
3. TEST CONDITION : 35°C LAB / 60%
4. POSITION OF THE SENSOR : SUCTION OPENING OF THE CABINE
5. OPERATING RATE : 26.5%

Chart (Aug 27)

[ Comp Current :2.73A Operating Current : 3.1A]

No.	Beating point Humidity	On	Off	AVERAGE
		60	60	60
81	Ambient temperature	34.5	34.5	34.5
82	Comp. in upper	52.4	34.1	43.2
83	Comp. out	41.0	27.0	34.0
84	Evap.in	-11.5	15.6	2.0
85	Evap. Out	2.0	11.1	6.5
86	Cond. In	24.4	31.0	27.7
87	Inner cabine-center (upper rear left)	4.4	5.5	4.9
88	Inner cabine-center (md md)	5.0	5.4	5.2
89	Inner cabine-center (lower front right)	5.5	5.7	5.6
90	sensor	3.4	6.2	4.8
-	low pressure	12PSI	45PSI	-
-	high pressure	155PSI	80PSI	-
-	Operating (4Cycle)	774 s	2145 s	26.5%

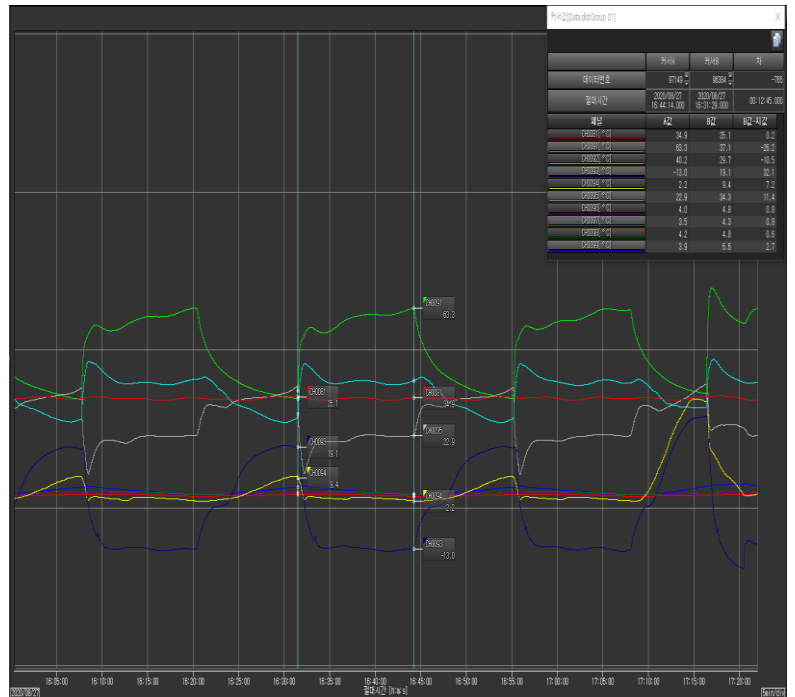


● Test Run data ( Model: Mortuary room ) lower side

1. TEST SPEC: 220V/60Hz/1Ph. Refrigerant R134a (450g)				
2. CAREL SETTING: 4°C				
3. TEST CONDITION : 35°C LAB / 60%				
4. POSITION OF SENSOR : SUCTION OPENING				
5. OPERATING RATE : 53.2%				
NO	Beating point	On	Off	AVERAGE
-	Humidity	60	60	60
81	Ambient Temp	34.9	35.1	35.0
91	Cond. (4 sensor)	63.3	37.1	50.2
92	Cond. out	40.2	29.7	34.9
93	Evap. in	-13.0	19.1	3.0
94	Evap. out	2.2	9.4	5.8
95	Comp. in	22.9	34.3	28.6
96	Inner center (LRU))	4.0	4.8	4.4
97	Inner center(mm)	3.5	4.3	3.9
98	Inner center(RFL)	4.2	4.8	4.5
99	sensor	3.9	6.6	5.2
-	Low pressure	5PSI	46PSI	-
-	High pressure	157PSI	50PSI	-
-	Operating	3023 s	2655 s	53.2%

Chart ( Aug 27 )

[Comp current :2.78A operating current lower side:3.06A]



● Test Run data ( Model: Mortuary room ) lower side / Upper side off

1. TEST SPEC: 220V/60Hz/1Ph. Refrigerant R134a (450g)
  2. CAREL SETTING: 4°C
  3. TEST CONDITION: 35°C LAB / 60%
  4. POSITION OF THE SENSOR : SUCTION OPENING
- 현 OPERATING RATE : 62.5%

NO	Beating	On	Off	AVERAGE
-	Humidity	60	60	60
81	Ambient	35.0	34.4	34.7
91	Cond. In(L)	63.5	35.6	49.5
92	Cond. out	40.7	28.3	34.5
93	Evap. in	-12.8	17.7	2.4
94	Evap. out	2.2	6.8	4.5
95	Comp. in	22.5	35.2	28.8
96	Inner C -LRU)	2.7	3.1	2.9
97	Inner C-M	2.3	2.6	2.4
98	Inner C-RFL	2.9	3.1	3.0
99	sensor	4.0	6.7	5.3
-	Low pressure	5PSI	46PSI	-
-	High Pressure	157PSI	50PSI	-
-	Operating	1608s	963s	62.5%

Chart ( Aug 27 )

[Comp Current :2.78A Operating Current -lower side:3.06A]

